

Coliseum South



A Photo Overview of the Coliseum South Ballpark Site
(Hegenberger/HomeBase)

Table of Contents

Overview	1
Map	2
Aerial Photo	3
Photographs	
Triangle Lot, West	4
Triangle Lot, North	5
Overpass, Southwest	6
Flood Control Channel, Southwest	7
Hegenberger & Channel, West	8
EDD Building, East	9
HomeBase, Northwest	10
Hegenberger, West	11
Collins Drive, South/Northeast	12
Denny's, South	13
Railroad Tracks/Platform, Northwest	14

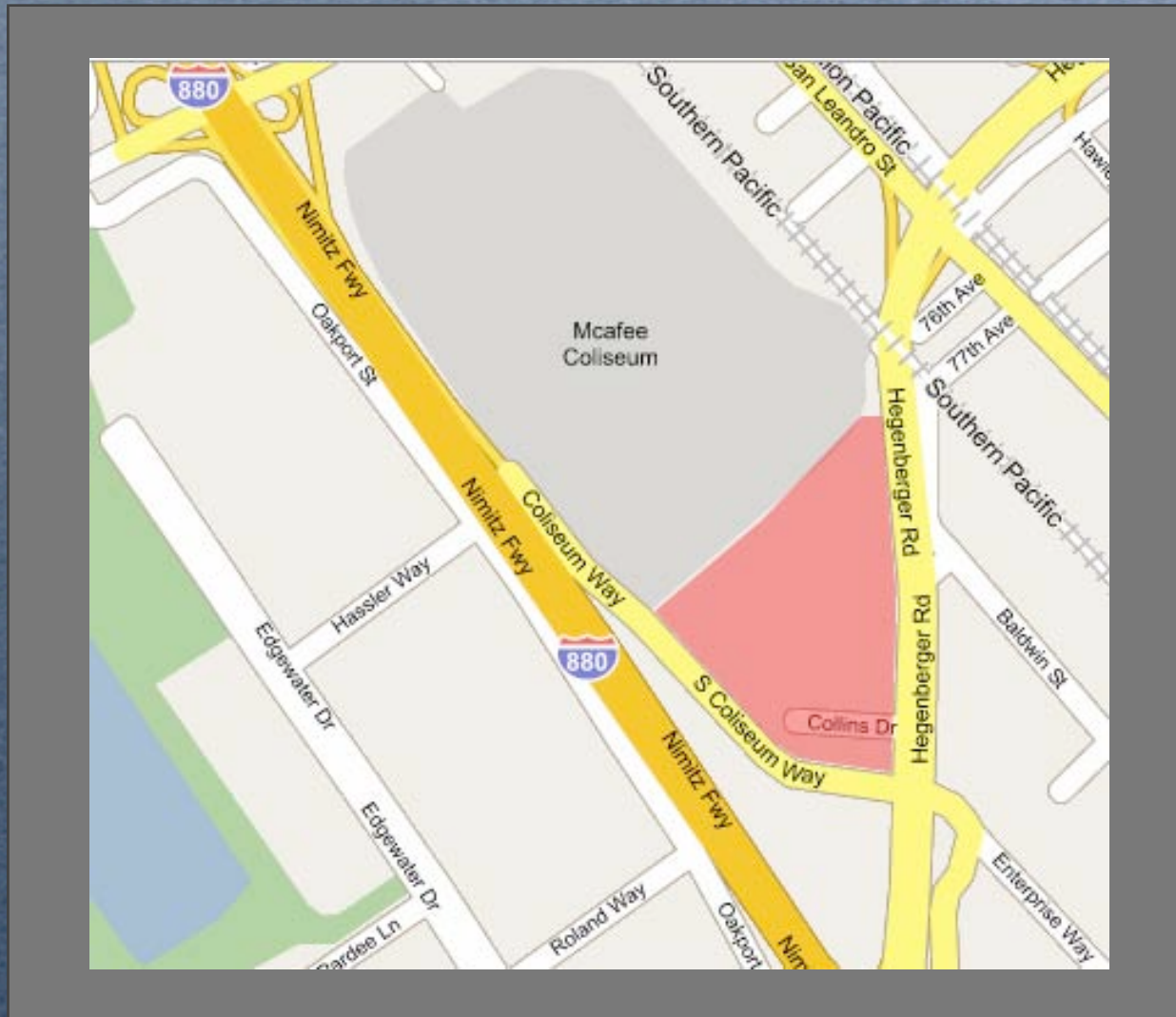
Overview

The following pages contains photographs and descriptions of a potential Oakland A's ballpark site known as Coliseum South. It is south of the 100-acre Coliseum complex, home of the Oakland Arena and the McAfee Coliseum. The 25-acre site is separated from the Coliseum complex by a flood-control channel.

The gravel-filled, 8.5 acre western lot (a.k.a. the "Triangle Lot") of the site is owned by the Coliseum Authority, and is used at times as overflow parking lot. East of it are several private properties, some abandoned and others in use. Chief among these is the HomeBase lot, which formerly contained HomeBase, a warehouse hardware store, and Auto Parts Club, an auto parts outlet. The eastern border is defined by Hegenberger Road, a major thoroughfare. At the north end of Hegenberger is the EDD building, and at the south end is a Denny's and a church building. Collins Drive runs north of Denny's and acts as an easement to the Triangle Lot.

The site's shape makes it easy for a ballpark to have an eastern orientation, but is large enough to turn 15-30 degrees north or south.

Map



Site in red. The site is not the existing Coliseum parking lot, which is immediately north of the site.

Aerial Photo



Site in **red**. The roughly triangle-shaped lot is bordered by Hegenberger Rd. to the east, Coliseum Way to the south, and a flood control channel to the north. The site is roughly 25 acres in size.

Triangle Lot, West



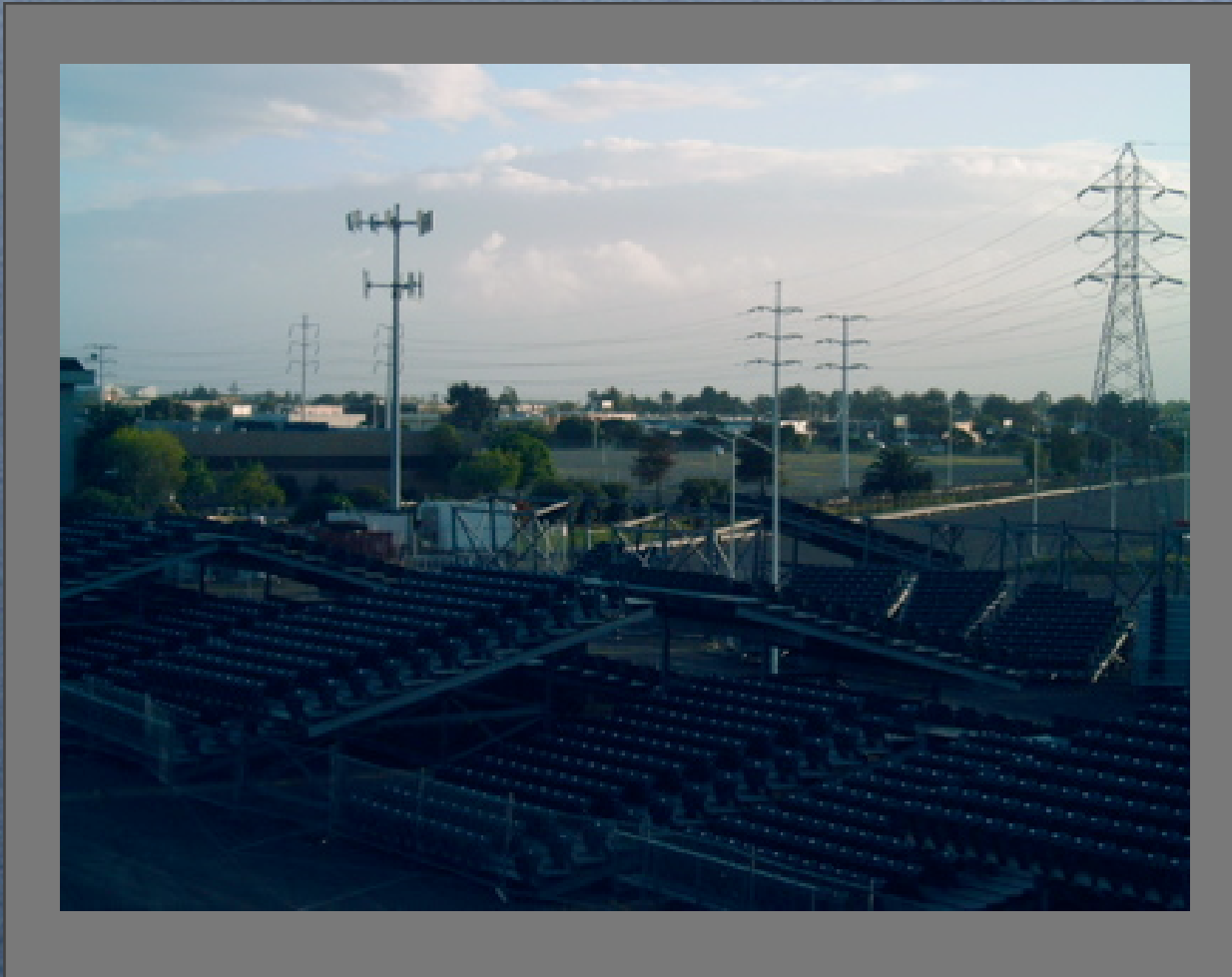
From Collins Drive, this photo looks west towards I-880 and the IKON Office Building across the freeway. Signage for the Coliseum is visible on the right.

Triangle Lot, North



View along eastern border of Triangle Lot. The electrical transmission lines in the photo would have to be relocated in order to build a ballpark.

Overpass, Southwest



View from Hegenerberger Road as it passes over train tracks and the flood control channel. The site is beyond the portable seats in the foreground. The EDD building is on the left, behind the cell tower.

Flood Control Channel, Southwest



This narrow body of water is fenced on both banks and separates the Coliseum complex from the site. A ballpark plan would probably include landscaping to beautify the channel, along with short pedestrian bridges to allow fans who park in the Coliseum's parking lot access to the site.

Hegenberger & Channel, West



A look from the northeast corner of the site, extending west. The channel is muddy and is strewn with litter. A portion of the EDD building is visible in the upper left corner. The arena is on the right.

EDD Building, East



View towards Hegenberger Road. There is a short buffer from the edge of the parking lot to the channel, most of it occupied by the vegetation on the left.

HomeBase, Northwest



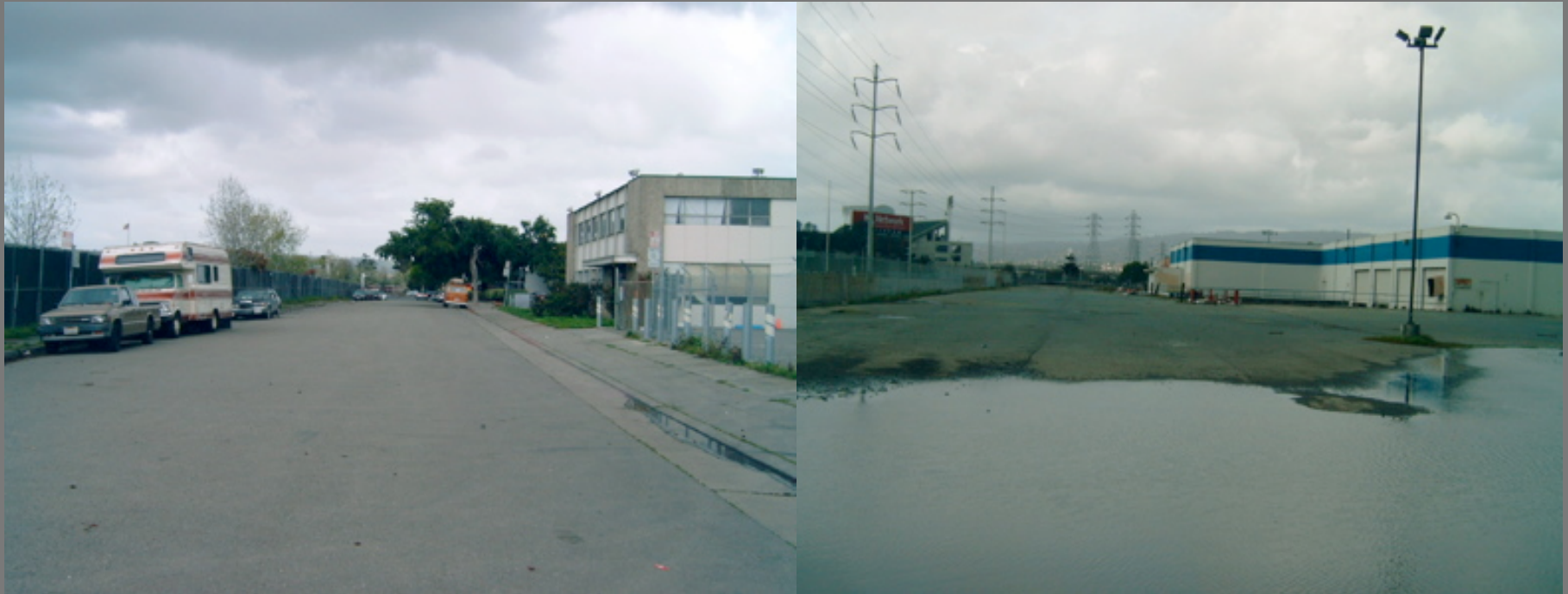
Picture taken on elevated position over two fences. A signaled vehicle entrance to the lot exists on Hegenberger at Baldwin. A second vehicle entrance exists, along with a gate at the end of Collins.

Hegenberger, West



View across parking lot towards IKON building. Electrical transmission lines cut through the site.

Collins Drive, South/Northeast



Left: End of Collins Drive towards Hegenberger
Right: HomeBase gate north.

Denny's, South



View south along Hegenberger, with Collins in the foreground. The signaled intersection is Coliseum Way. The Oakland Truck Center is across Coliseum Way from Denny's.

Railroad Tracks/Platform, Northwest



The Coliseum Intercity Rail Station is nearly finished. Once complete, it will provide a platform for Amtrak's Capitol Corridor trains, which previously could only stop at Jack London Square. There will be limited parking for Amtrak users.