

-----Original Message-----

From: Ryan Horning [<mailto:rhorning@athletics.com>]

Sent: Thursday, November 05, 2015 3:07 PM

To: Cappio, Claudia

Cc: Woo, Winnie

Subject: RE: More A's Data

Thanks! Have a great vacation.

Ryan Horning

Assistant General Counsel

Oakland Athletics

510-563-2235

7000 Coliseum Way Oakland, CA 94621

-----Original Message-----

From: Cappio, Claudia [<mailto:CCappio@oaklandnet.com>]

Sent: Thursday, November 05, 2015 3:01 PM

To: Ryan Horning

Cc: Woo, Winnie

Subject: More A's Data

Hi Ryan -- here is the other information I mentioned yesterday. Unfortunately, I could only scan in black and white. We have a color copy and I will leave it with Winnie Woo in my office if you want to come pick it up. Regards, Claudia

From: Ryan Horning [<mailto:rhorning@athletics.com>]
Sent: Thursday, November 05, 2015 1:39 PM
To: Cappio, Claudia
Subject: RE: A's information on site options

Claudia – Any luck on getting the remainder of the information you were going to send today? Thanks.
Ryan



Ryan Horning

Assistant General Counsel

510-563-2235

7000 Coliseum Way Oakland, CA 94621

athletics.com   

From: Cappio, Claudia [<mailto:CCappio@oaklandnet.com>]
Sent: Wednesday, November 04, 2015 6:46 PM
To: Ryan Horning
Subject: A's information on site options

Hi Ryan – I have attached an alternative sites map with 10 sites. Although we are not yet complete with our review, only 5 may be feasible. Uptown and Victory Court have a lot of land to assemble. Nonetheless – in the mix. I will have more information tomorrow morning to send on. I hope this information is helpful.

We can schedule a longer meeting in late November, early December after our review is complete. In the meantime, I will have Pat Cashman send on the draft evaluation criteria for you and your team to review. You can send back any comments. I will be on an extended vacation during the next few weeks – leaving on Friday. Pat is available if you have additional questions or concerns. Regards, Claudia

This email communication is intended for the sole use of the intended recipient(s). Any unauthorized review, use, disclosure or distribution is prohibited. If you are not the recipient, please contact the sender by reply email and destroy all copies of the original message and any attachments. Thank you.

From: Cappio, Claudia
Sent: Wednesday, November 04, 2015 6:46 PM
To: Ryan Horning
Subject: A's information on site options

Hi Ryan – I have attached an alternative sites map with 10 sites. Although we are not yet complete with our review, only 5 may be feasible. Uptown and Victory Court have a lot of land to assemble. Nonetheless – in the mix. I will have more information tomorrow morning to send on. I hope this information is helpful.

We can schedule a longer meeting in late November, early December after our review is complete. In the meantime, I will have Pat Cashman send on the draft evaluation criteria for you and your team to review. You can send back any comments. I will be on an extended vacation during the next few weeks – leaving on Friday. Pat is available if you have additional questions or concerns. Regards, Claudia

This email communication is intended for the sole use of the intended recipient(s). Any unauthorized review, use, disclosure or distribution is prohibited. If you are not the recipient, please contact the sender by reply email and destroy all copies of the original message and any attachments. Thank you.

-----Original Message-----

From: Cappio, Claudia

Sent: Thursday, November 05, 2015 3:01 PM

To: Ryan Horning

Cc: Woo, Winnie

Subject: More A's Data

Hi Ryan -- here is the other information I mentioned yesterday. Unfortunately, I could only scan in black and white. We have a color copy and I will leave it with Winnie Woo in my office if you want to come pick it up. Regards, Claudia



Google earth

miles
km



Oakland Ballpark Sites

November

Private Confidential

Ten Alternative Oakland Ballpark Sites

- X Indicates the sites that due to site assembly requirements are not feasible
- Indicates the sites that merit further consideration

Land Assembly using eminent domain is severely limited due loss of redevelopment eminent domain powers and funds.

Sites that merit further consideration are substantially publicly owned, with the acquisition of only one or two private owners required.



Google earth

feet
meters

1000

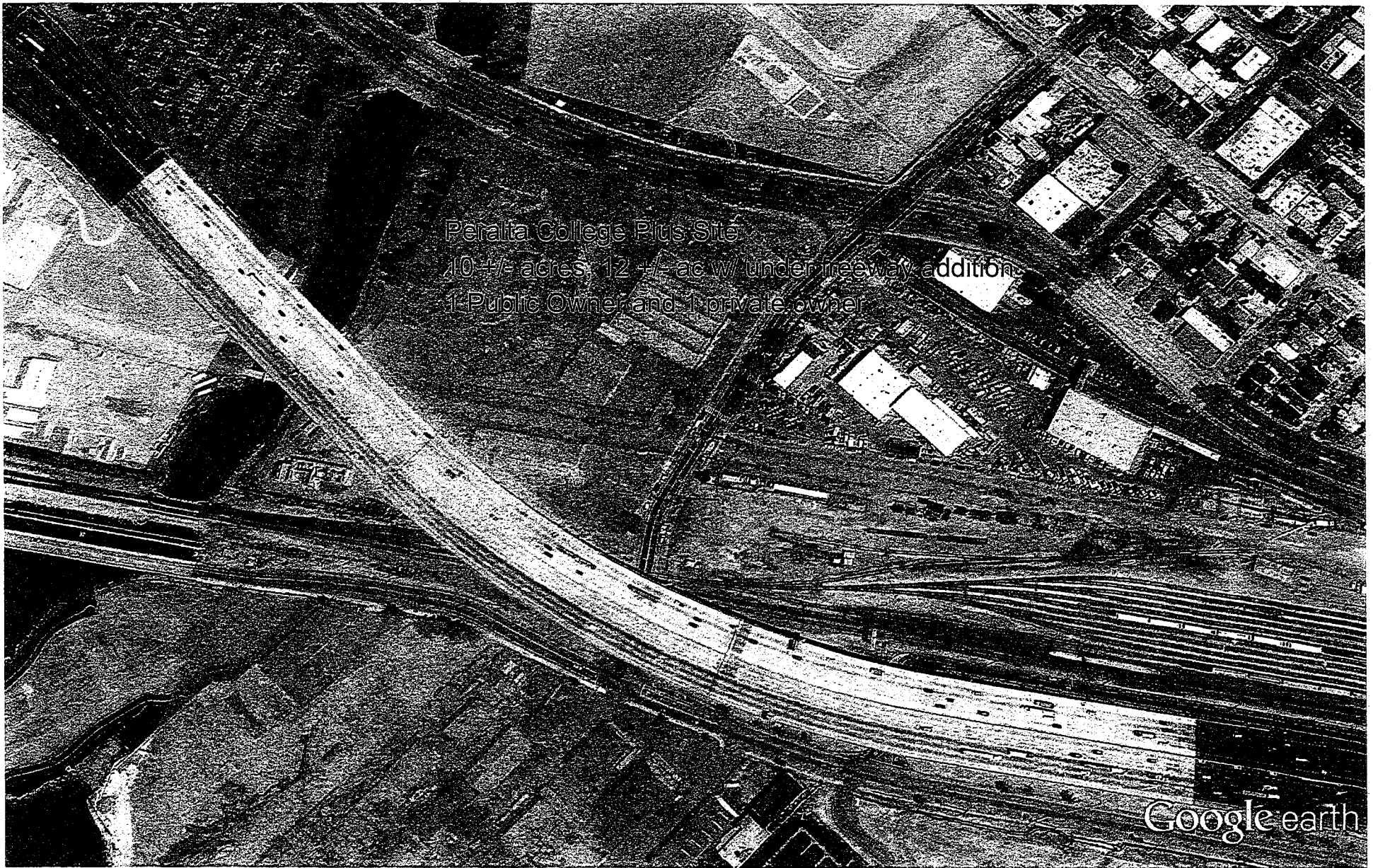
400



Laney College Playing Fields

Oakland Ballpark Sites
November 2015
Private Confidential

Good BART access but limited supportive parking
New stadium, ballpark, and field house require relocation



Google earth

feet
meters

1000

400



Oakland Ballpark Sites
November 2015

Peralta College Plus Estuary Site

Peralta College Administration Offices and adjacent lumber distribution warehouse
Requires relocating Peralta college facilities

Peralta College Plan

Advantages

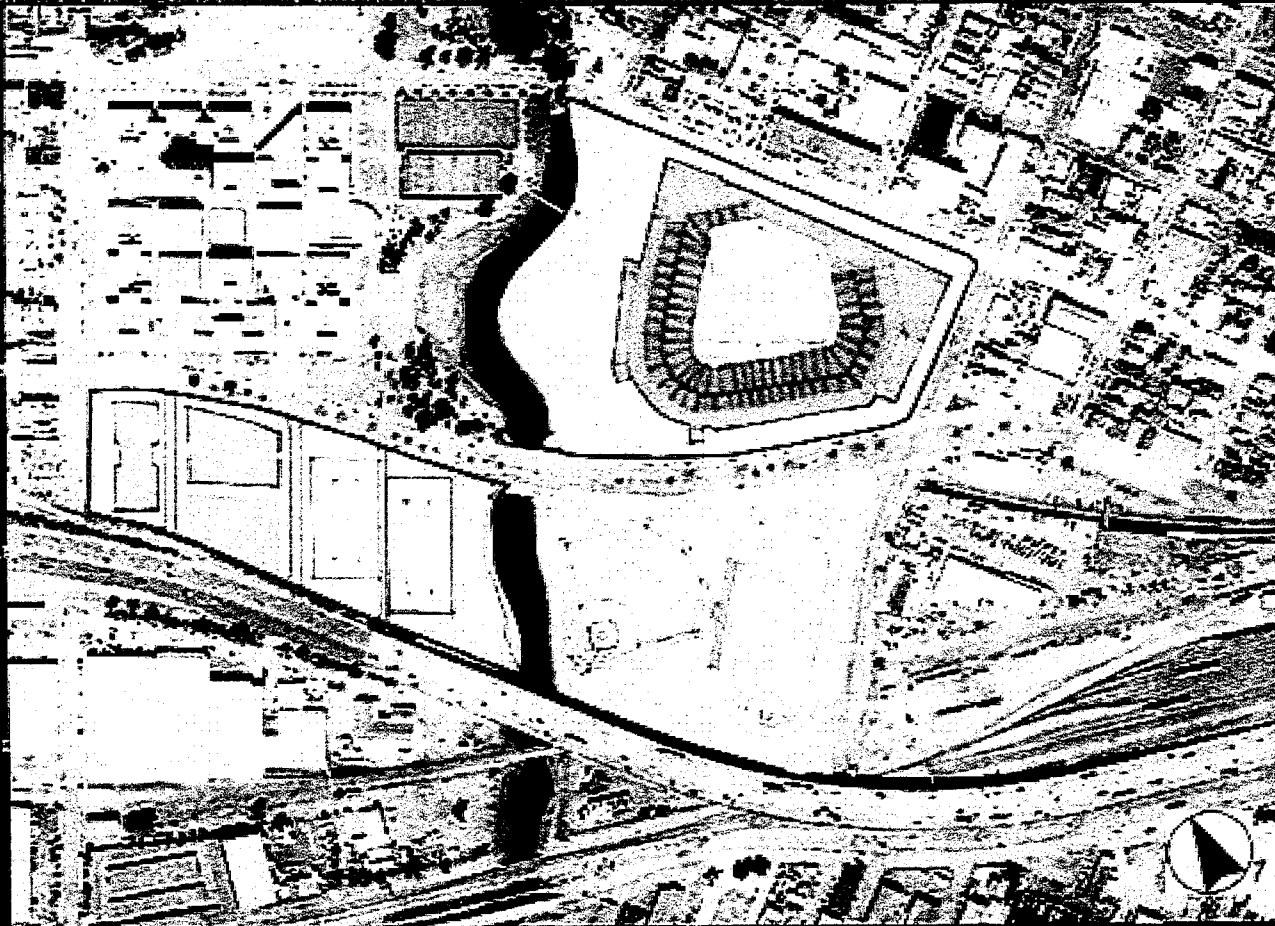
- Proximity to Lake Merritt Slough
- View to Hills
- Proximity to BART

Disadvantages

- Proximity to Parking
- Requires Replacement of Existing Athletic Facilities and Administration

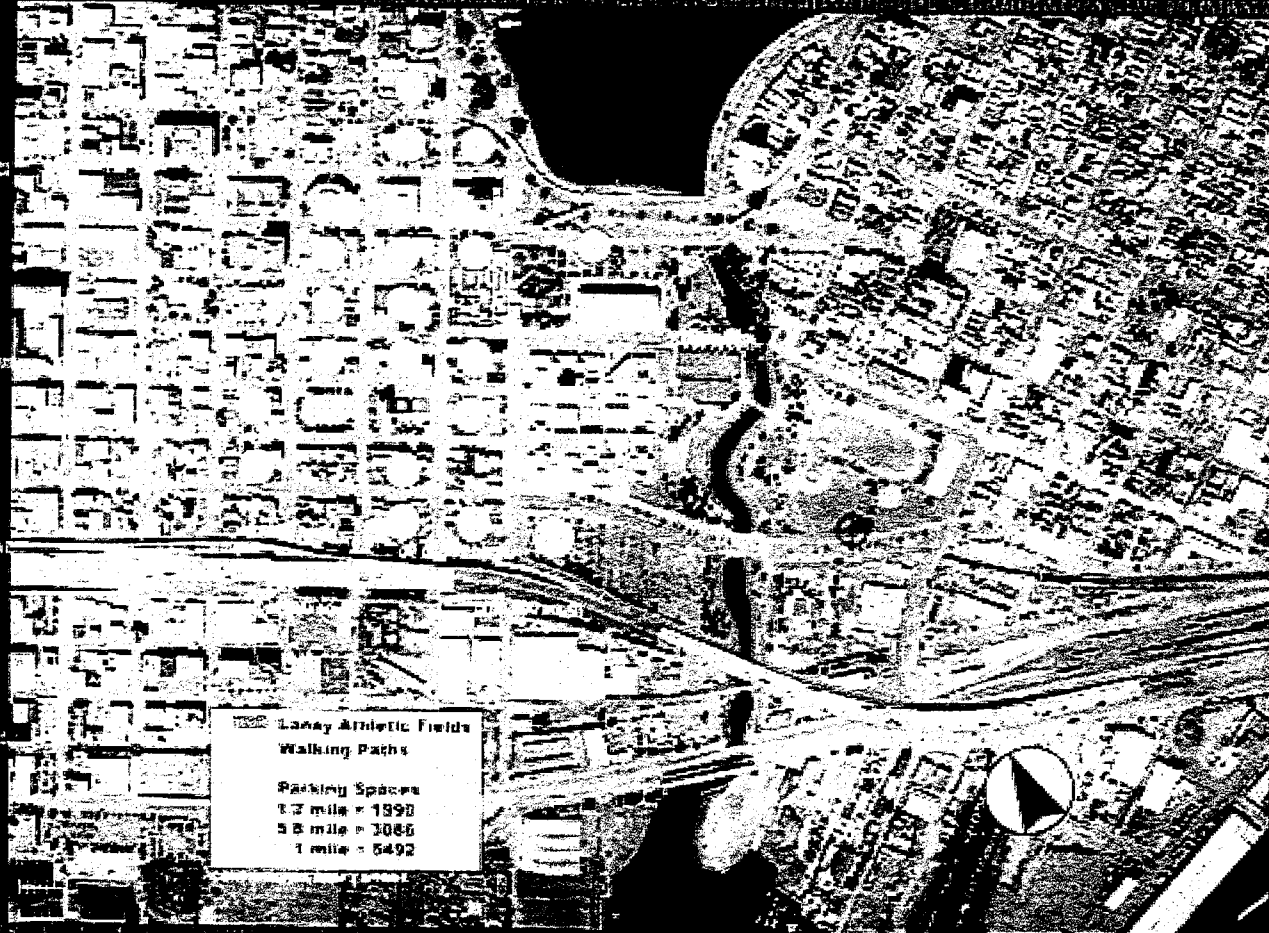
Key Issues

- Parking
- Acquisition Potential



O A K L A N D

Peralta College Plan



Looney Athletic Fields
Walking Paths
Parking Spaces
1.2 mile = 1990
3.8 mile = 3086
1 mile = 5492

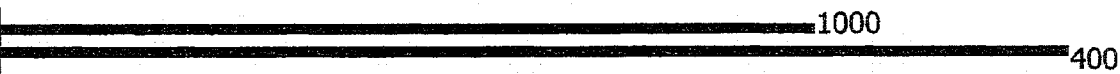
O A K L A N D

BL



Google earth

feet
meters



Oakland Ballpark Sites

November 2015

Confidential

Brooklyn Basin Site

Port Property controlled by Signature Development
 Silvera Tenants will fight ballpark even if Silvera sells

9th to Oak Plan

Advantages

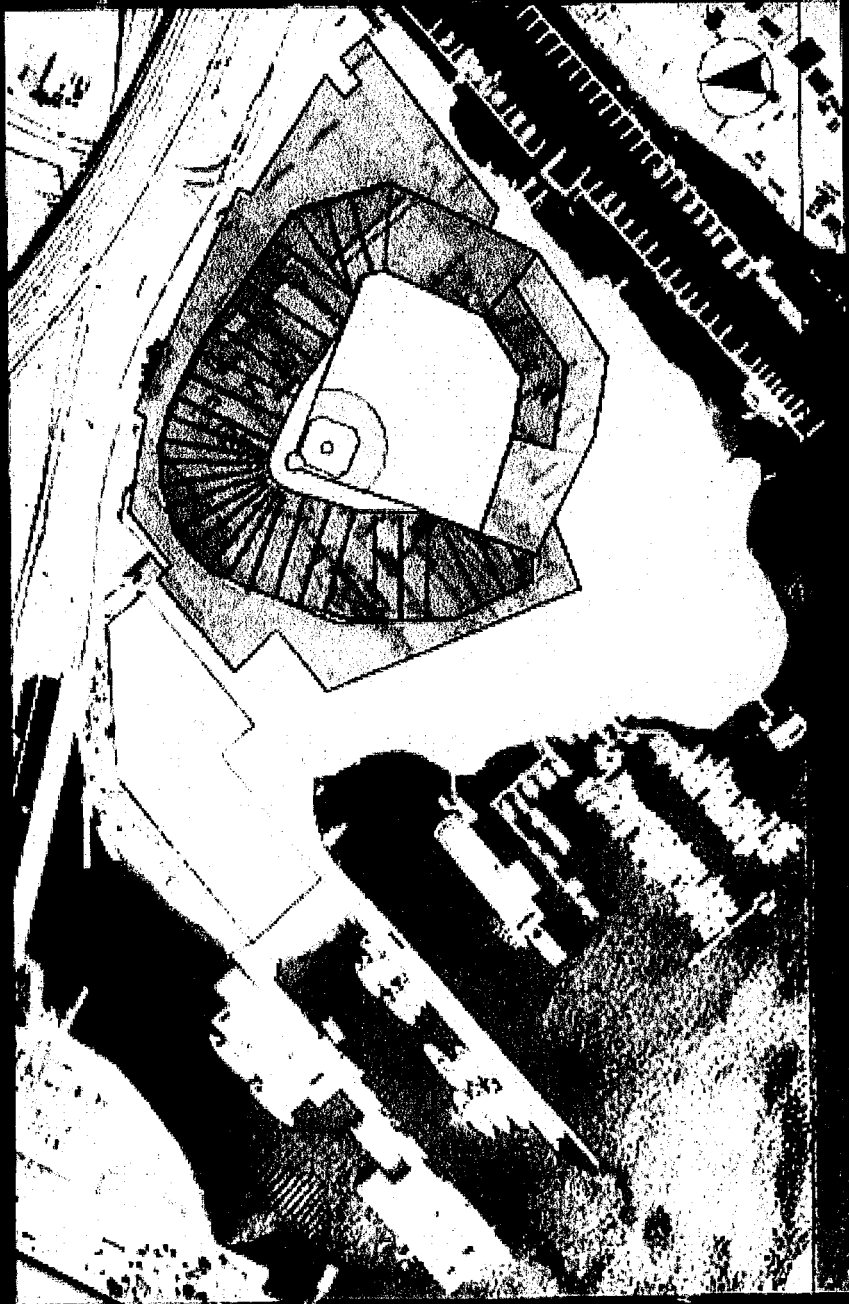
- Waterfront Setting
- Extension of Park System

Disadvantages

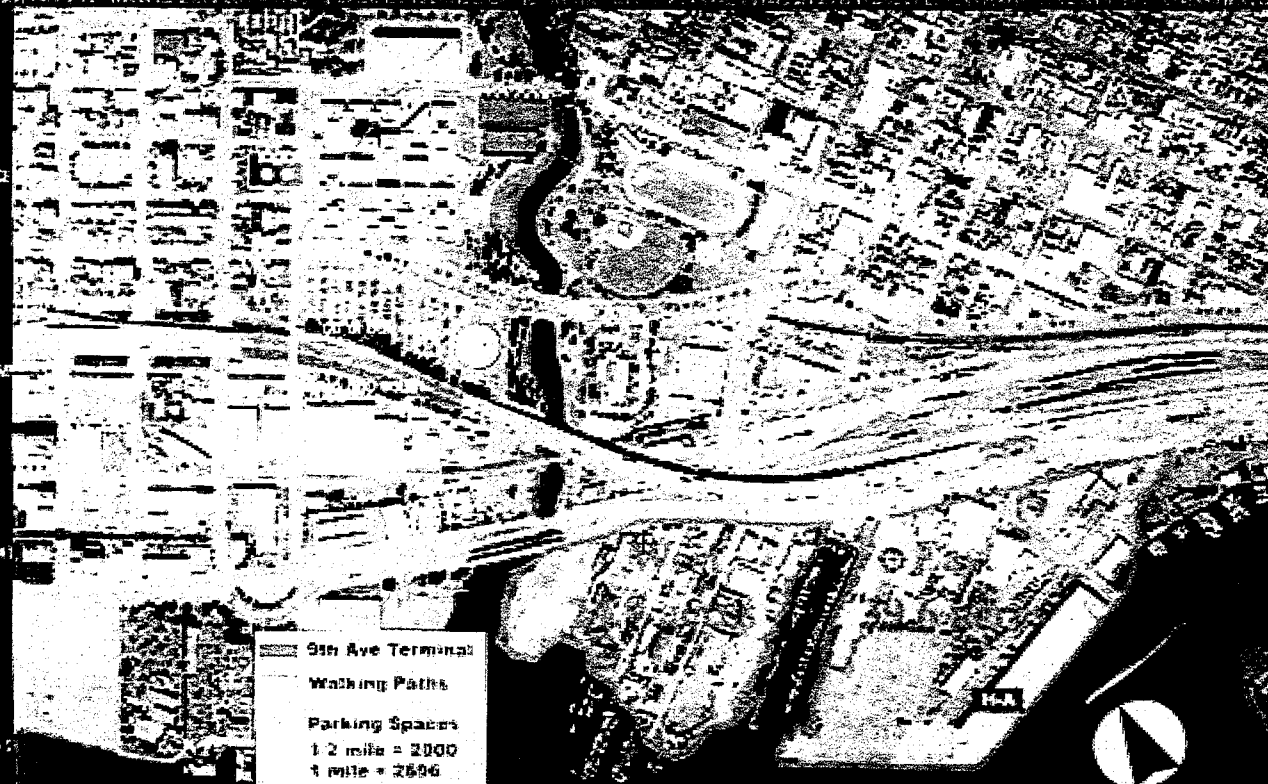
- Access
- Proximity to Parking
- Multiple Ownership

Key Issues

- Transportation
- Parking



9th to Oak Plan



- 9th Ave Terminal
- Walking Paths
- Parking Spaces
1/2 mile = 2000
1 mile = 2606
- Historic Rating

CONFIDENTIAL DRAFT 8/19/01

O A K L A N D

11



Google earth

feet
meters



Oakland Baseball Sites

November 2015

Private & confidential

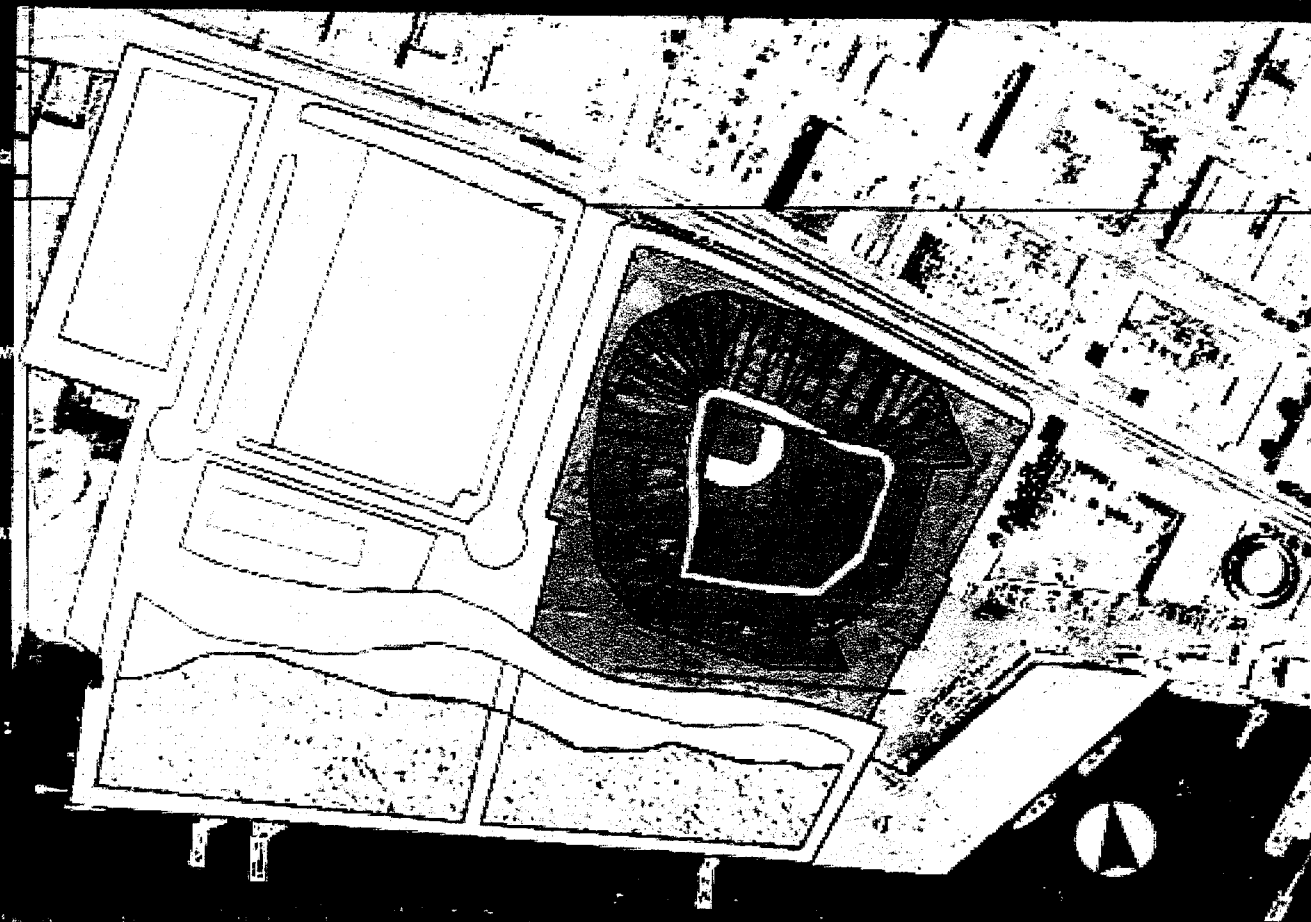
Howard Terminal

Largest publicly owned and available site in downtown Oakland

minute walk to BART and to on and off street parking spaces

Potential for major ancillary development, connecting to Jack London Square retail and residentia

Howard Terminal Plan



O A K L A N D

Advantages

- Waterfront Setting
- Extension of Jack London Square
- Restoration of Existing Shoreline

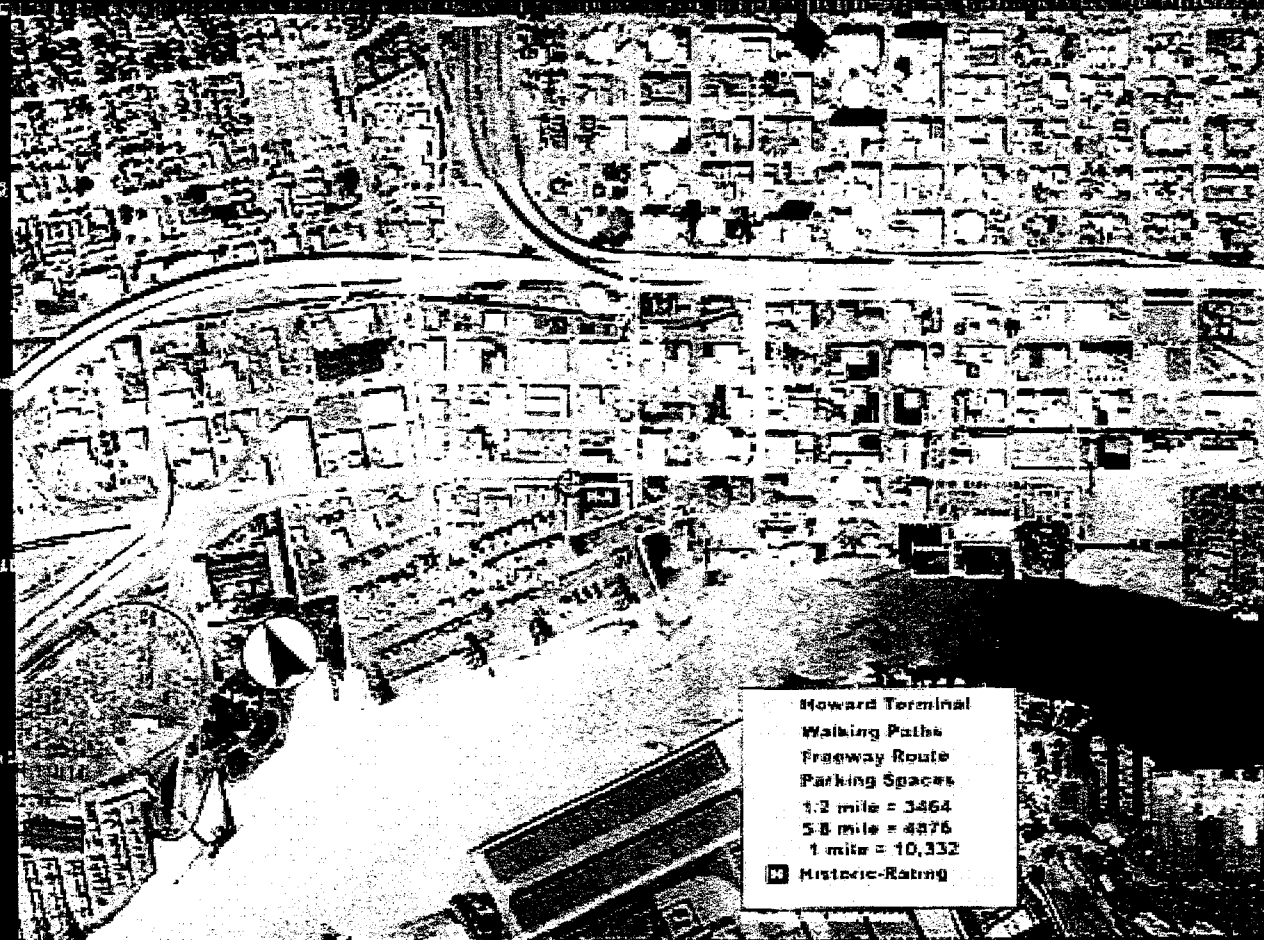
Disadvantages

- Proximity to Transit and Parking
- Displaces Port Functions

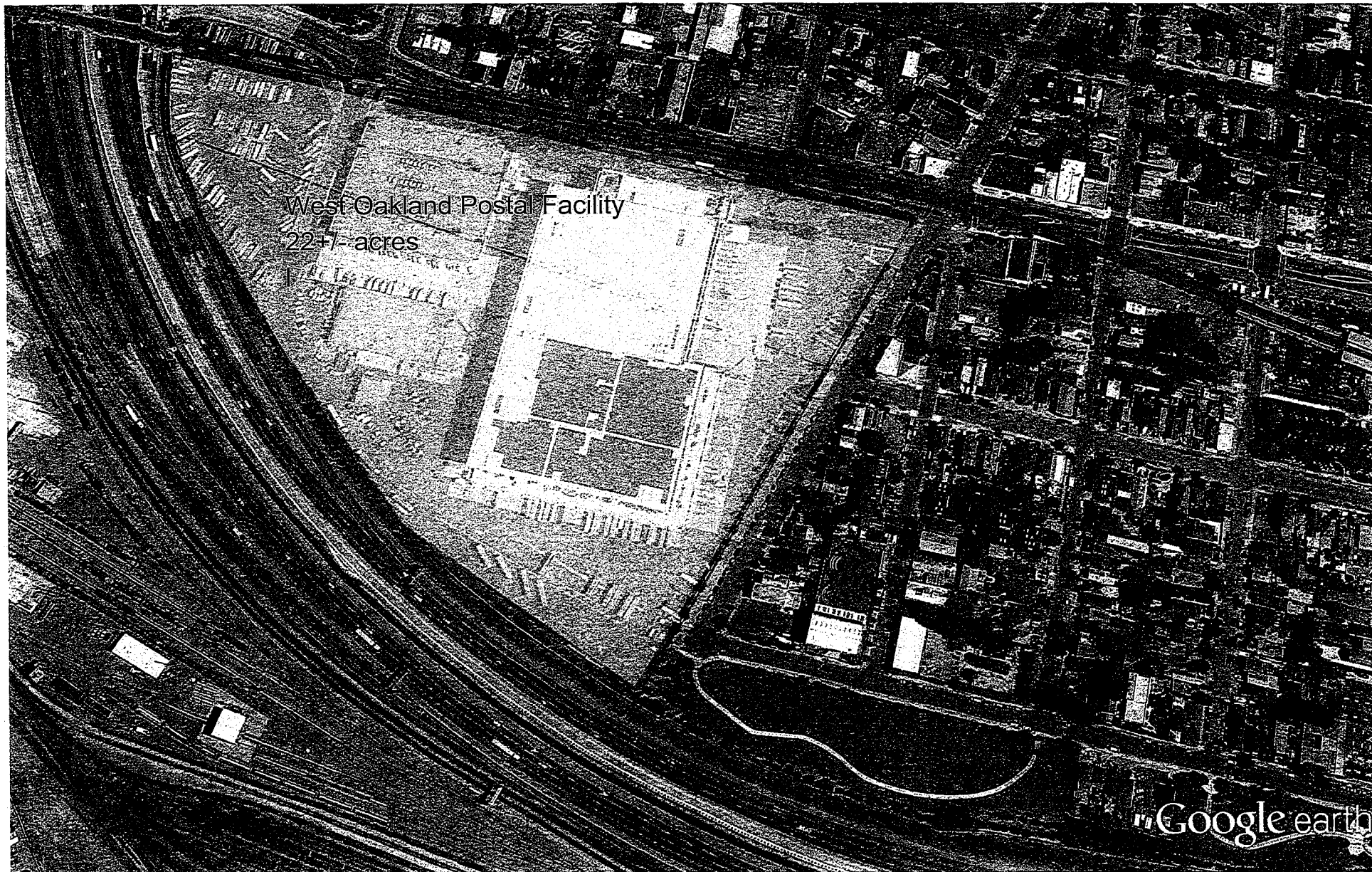
Key Issues

- Resolve Parking Requirements
- Shared Parking with Entertainment and Retail
- Cost of Relocating Port And Cranes

Howard Terminal Plan



O A K L A N D



Google earth

feet
meters

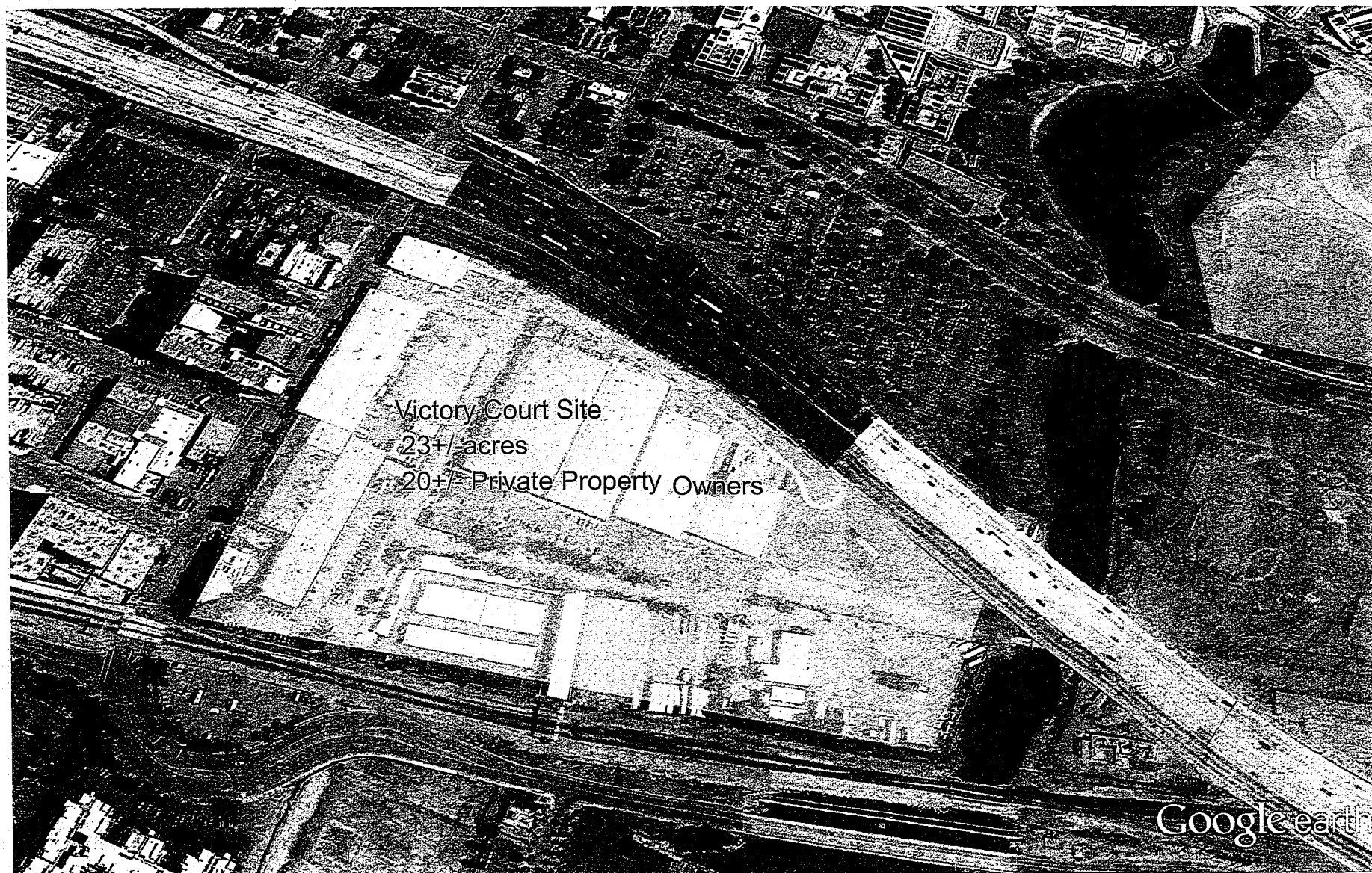
1000

400



Oakland Ballpark Sites
October 2015

West Oakland Postal Facility
No indication Post Office wants to sell



Google earth
Oakland Ballpark Sites

October 2015
Confidential

feet
meters 1000 400

Victory Court Site
Not feasible due to land assembly requirements



Google earth

feet
meters

1000

500

Oakland Ballpark Sites

November 2015

Private and Confidential

Uptown San Pablo and Over

Sites

Not feasible due to land assembly requirements



Google earth

feet
meters

1000

500



Oakland Ballpark Sites

November 2015

Private & Confidential

Uptown Broadway th th

Not feasible due to land assembly requirements



Google earth

feet
meters

1000

400



Oakland Ballpark sites
October 2015

N.W. Jack London Square
Not feasible due to land assembly requirements